

**memo camira**





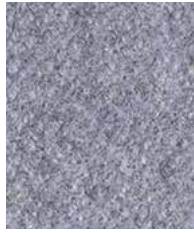
**Oceanic Paddle**  
OOC13



**Rivet Molten**  
EGL09



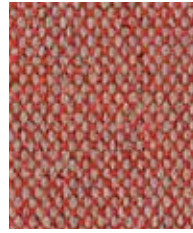
**Main Line Flax Monument** MLF09



**Synergy Venture**  
LDS05



**Oceanic Gulf**  
OOC15



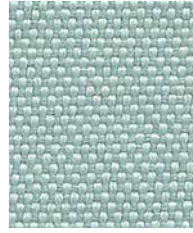
**Main Line Flax Barbican** MLF03



**Synergy Affinity**  
LDS74



**Rivet Prime**  
EGL16



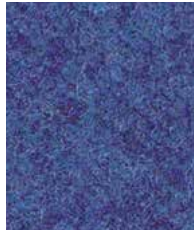
**Quest Ripple**  
QUE07



**Gravity Tigerlily**  
CPC11



**Oceanic Neptune**  
OOC11



**Synergy Collaborate**  
LDS68



**Synergy Family**  
LDS58



**Main Line Flax Bethnal** MLF25



**Quest Whelk**  
QUE08



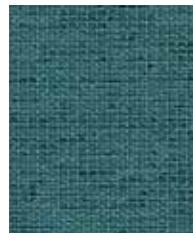
**Rivet Lagoon**  
EGL35



**Oceanic Atoll**  
OOC06



**Craggan Flax Cave** CRA06



**Gravity Lake**  
CPC09



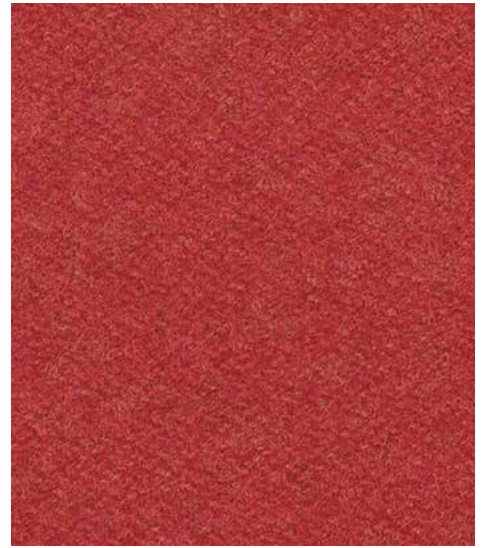
**Era Stage**  
CSE15



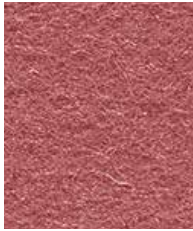
**Era Sequence**  
CSE25



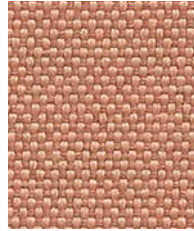
**Craggan Flax**  
Talus CRA14



**Synergy Share**  
LDS85



**Blazer Barlborough**  
CUZ3D



**Quest Shrimp**  
QUE26



**Oceanic Aquatic**  
OOC12



**Synergy Apt**  
LDS80



**Main Line Flax**  
Aldgate MLF01



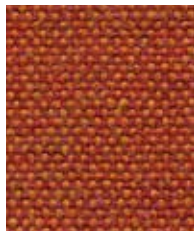
**Era Turn**  
CSE26



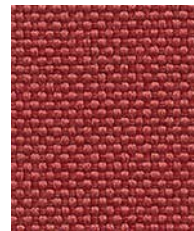
**Oceanic Abyss**  
OOC10



**Rivet Deep Clay**  
EGL32



**Main Line Flax**  
Leyton MLF13



**Quest Cockle**  
QUE23



**Blazer Hardcross**  
CUZ63



**Quest Limpet**  
QUE09



**Rivet Otter**  
EGL36



**Blazer Edge Hill**  
CUZ90



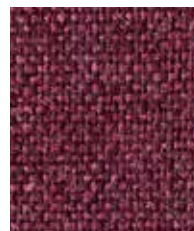
**Gravity Rose**  
CPC13



**Synergy Group**  
LDS59



**Synergy Values**  
LDS87



**Main Line Flax**  
Wembley MLF11



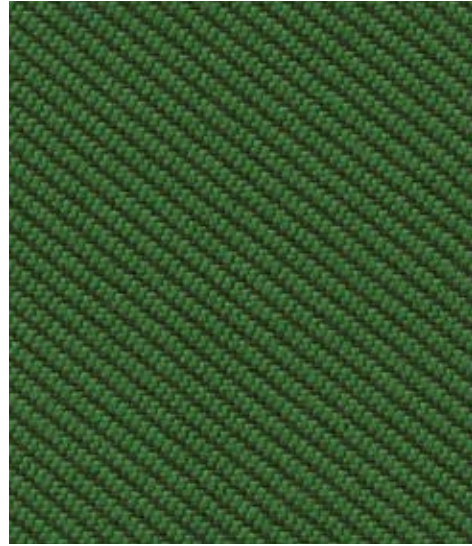
**Quest Sea Grass**  
QUE13



**Synergy Regard**  
LDS54



**Quest Kelp**  
QUE15



**Oceanic Coast**  
OOC03



**Gravity Gooseberry**  
CPC07



**Main Line Flax  
Farrington** MLF29



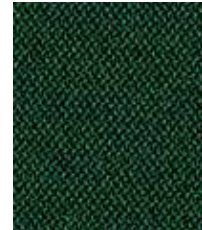
**Main Line Flax  
Goldhawk** MLF31



**Quest Algae**  
QUE14



**Synergy Comply**  
LDS52



**Era Signature**  
CSE35



**Oceanic Barrier**  
OOC07



**Rivet Spark**  
EGL10



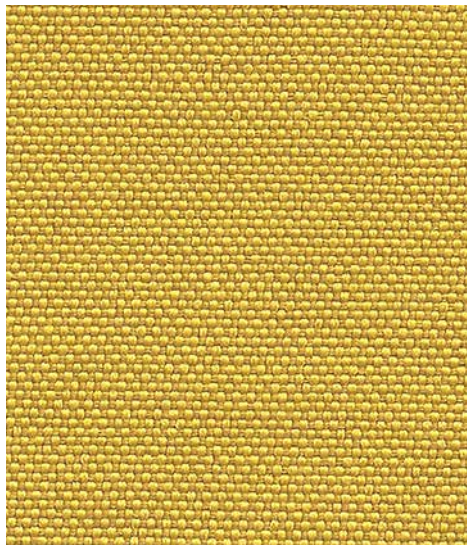
**Gravity Mustard**  
CPC14



**Synergy Pact**  
LDS53



**Craggan Flax  
Brae** CRA20



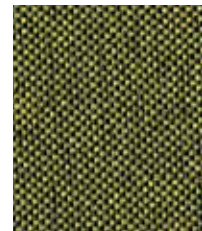
**Quest Sandstone**  
QUE20



**Craggan Flax  
Knoll** CRA11



**Main Line Flax  
Tufnell** MLF18



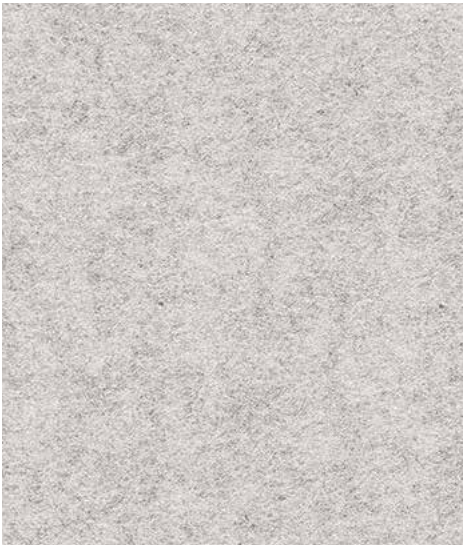
**Rivet Olive**  
EGL31



**Synergy Lateral**  
LDS28



**Main Line Flax  
Finsbury** MLF30



**Blazer Dartmouth**  
CUZ2Q



**Rivet Resin**  
EGL04



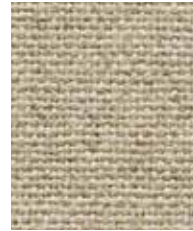
**Era Transition**  
CSE30



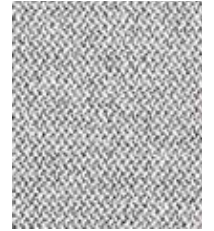
**Gravity Frost**  
CPC32



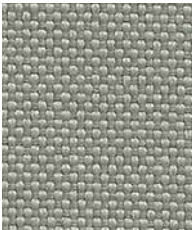
**Craggan Flax**  
Esker CRA21



**Main Line Flax**  
Upminster MLF20



**Era Memo**  
CSE46



**Quest Fossil**  
QUE02



**Synergy Chain**  
LDS19



**Main Line Flax**  
Bank MLF23



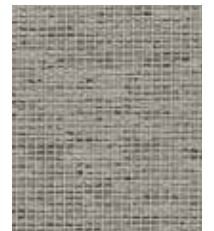
**Blazer Silverdale**  
CUZ28



**Era Futurist**  
CSE01



**Main Line Flax**  
Temple MLF16



**Gravity Dove**  
CPC17



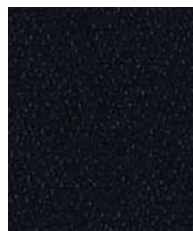
**Rivet Charcoal**  
EGL37



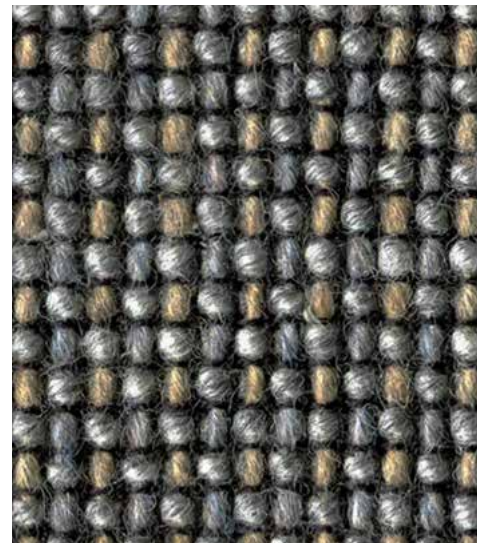
**Synergy Partner**  
LDS16



**Blazer Aberlour**  
CUZ1J



**Era Forward**  
CSE14



**Craggan Flax Gravel**  
CRA08

---

## Blazer

---

### Memo Group 7

---

#### Composition

100% Pure New Wool

---

#### Environmental

Certified to Indoor Advantage™ Gold  
Rapidly renewable and compostable  
Non metallic dyestuffs

---

#### Width

54 inches minimum

---

#### Weight

13<sup>1</sup>/<sub>2</sub> oz/sq yd ±5% (20<sup>1</sup>/<sub>4</sub> oz/running. yd ±5%)

---

#### Abrasion Resistance\*

ASTM D4157 Wyzenbeek method, Heavy Duty Upholstery  
Independently certified to ≥75,000 double rubs  
Covered by a full and comprehensive 10 year guarantee (full details available)

---

#### Flammability

California Technical Bulletin 117 - 2013  
NFPA 260 + UFAC Class 1  
BS 7176 Low Hazard  
ASTM E84 Class 1 or A (Adhered)  
ASTM E84 Class 1 or A (Un-adhered)  
IMO FTP Code (Part 8)  
NFPA 701 when FR treated

**Optional: Please specify when ordering:**  
BS 7176 Medium Hazard with FR Treatment

Note: Flammability performance is dependent on components used. Our certificates show what substrates have been used in our tests. For composite tests customers must ensure their complete furniture meets the necessary standards.

---

#### Color Fastness to Light

AATCC-16 (40 hours) Class 4

---

#### Color Fastness to Crocking

AATCC-8 (Dry: 4, Wet: 3)

---

#### Acoustic Properties

Acoustically transparent, Acoustic graphs available upon request

---

#### Cleaning

W/S

Clean with a water-based cleaning agent or solvent: Depending on the stain, you can use a dry-cleaning solvent, the foam of a mild detergent, or upholstery shampoo.

---

\*Abrasion test results exceeding ACT Performance Guidelines are not an indicator of product lifespan. Multiple factors affect fabric durability and appearance retention. We're confident in the durability of our products so we provide a robust 10 year guarantee (full details available). This product is externally certified, details of which are on our website and available from our customer services team. Batch to batch variations in shade may occur within commercial tolerances. We reserve the right to alter technical specifications without notice. The Unregistered Design Rights and the Copyright in all designs are the exclusive property of Camira Fabrics Limited.

---

## Craggan Flax

---

### Memo Group 9

---

#### Composition

85% Wool, 10% Flax, 5% Nylon

---

#### Environment

Certified to Indoor Advantage™ Gold  
Contains wool and bast fiber

---

#### Width

54 inches minimum

---

#### Weight

18<sup>1</sup>/<sub>2</sub> oz/sq yd ±5% (28 oz/running yd ±5%)

---

#### Abrasion Resistance\*

D4966 Martindale method, Heavy Duty Upholstery  
Independently certified to ≥100,000 cycles  
Covered by a full and comprehensive 10 year guarantee (full details available)

---

#### Flammability

California Technical Bulletin 117 - 2013  
NFPA 260 + UFAC Class 1  
BS 7176 Medium Hazard  
ASTM E84 Class 1 or A (Adhered)  
ASTM E84 Class 2 or B (Un-adhered)  
IMO FTP Code (Part 8)

**Optional: Please specify when ordering:**  
BS 7176 Medium Hazard with FR Treatment

Note: Flammability performance is dependent on components used. Our certificates show what substrates have been used in our tests. For composite tests customers must ensure their complete furniture meets the necessary standards.

---

#### Color Fastness to Light

AATCC-16 (40 hours) Class 4

---

#### Color Fastness to Crocking

AATCC-8 (Dry: 4, Wet: 3)

---

#### Cleaning

W/S

Water-based cleaning agent or solvent: Depending on the stain, you can use a dry-cleaning solvent, the foam of a mild detergent, or upholstery shampoo.

---

\*Abrasion test results exceeding ACT Performance Guidelines are not an indicator of product lifespan. Multiple factors affect fabric durability and appearance retention. We're confident in the durability of our products so we provide a robust 10 year guarantee (full details available). This product is externally certified, details of which are on our website and available from our customer services team. Batch to batch variations in shade may occur within commercial tolerances. We reserve the right to alter technical specifications without notice. The Unregistered Design Rights and the Copyright in all designs are the exclusive property of Camira Fabrics Limited.

---

## Era

---

### Memo Group 2

---

#### Composition

100% Polyester

---

#### Environment

Certified to OEKO-TEX® Standard 100  
Certified to Indoor Advantage™ Gold  
Non metallic dyestuffs.

---

#### Width

54 inches minimum

---

#### Weight

9<sup>1</sup>/<sub>2</sub> oz/sq yd ±5% (14<sup>1</sup>/<sub>4</sub> oz/running yd ±5%)

---

#### Abrasion Resistance\*

ASTM D4157 Wyzenbeek method, Heavy Duty Upholstery  
Independently certified to ≥100,000 double rubs  
Covered by a full and comprehensive 10 year guarantee (full details available)

---

#### Flammability

California Technical Bulletin 117 - 2013  
NFPA 260 + UFAC Class 1  
BS 7176 Low Hazard  
ASTM E84 Class 1 or A (Adhered)  
ASTM E84 Class 1 or A (Un-adhered)  
UL 723

**Optional: Please specify when ordering:**  
BS 7176 Medium Hazard with EnviroFlam5

Note: Flammability performance is dependent on components used. Our certificates show what substrates have been used in our tests. For composite tests customers must ensure their complete furniture meets the necessary standards.

---

#### Color Fastness to Light

AATCC-16 (40 hours) Class 4

---

#### Color Fastness to Crocking

AATCC-8 (Dry: 4, Wet: 3)

---

#### Acoustic Properties

Acoustically transparent, acoustic graphs available upon request.

---

#### Bleach Cleanable

ISO 105 E03 color change 4 for dilution factor 1:4 chlorine solution

---

#### Cleaning

W/S

Vacuum regularly. Wipe with a damp cloth using a proprietary upholstery shampoo/soap. For deeper cleaning use steam, bleach, alcohol or professionally dry clean. Can be washed at 140F. Full details can be found in our cleaning and disinfection guide.

---

\*Abrasion test results exceeding ACT Performance Guidelines are not an indicator of product lifespan. Multiple factors affect fabric durability and appearance retention. We're confident in the durability of our products so we provide a robust 10 year guarantee (full details available). This product is externally certified, details of which are on our website and available from our customer services team. Batch to batch variations in shade may occur within commercial tolerances. We reserve the right to alter technical specifications without notice. The Unregistered Design Rights and the Copyright in all designs are the exclusive property of Camira Fabrics Limited.

---

## Gravity

---

### Memo Group 2

---

#### Composition

76% Polyester, 24% Post Consumer Recycled Polyester

---

#### Environmental

Certified to OEKO-TEX® Standard 100  
Certified to Indoor Advantage™ Gold  
Non metallic dyestuffs

---

#### Width

54 inches minimum

---

#### Weight

8<sup>3/4</sup> oz/sq yd ±5% (13 oz/running yd ±5%)

---

#### Abrasion Resistance\*

ASTM D4157 Wyzenbeek method.

Heavy Duty Upholstery independently certified to  
≥75,000 double rubs.

Covered by a full and comprehensive 10 year guarantee  
(full details available)

---

#### Flammability

California Technical Bulletin 117 - 2013

NFPA 260 + UFAC Class 1

BS 7176 Low Hazard

Note: Flammability performance is dependent on components used. Our certificates show what substrates have been used in our tests. For composite tests customers must ensure their complete furniture meets the necessary standards.

---

#### Color Fastness to Light

AATCC-16 (40 hours) Class 4

---

#### Color Fastness to Crocking

AATCC-8 (Dry: 4, Wet: 3)

---

#### Bleach Cleanable

ISO 105 E03 color change 4 for dilution factor 1:4  
chlorine solution

---

#### Cleaning

W/S

Clean with a water-based cleaning agent or solvent:  
Depending on the stain, you can use a dry-cleaning  
solvent, the foam of a mild detergent, or upholstery  
shampoo. Can be washed at 140F. Full details can be  
found in our cleaning and disinfection guide.

\*Abrasion test results exceeding ACT Performance Guidelines are not an indicator of product lifespan. Multiple factors affect fabric durability and appearance retention. We're confident in the durability of our products so we provide a robust 10 year guarantee (full details available). This product is externally certified, details of which are on our website and available from our customer services team. Batch to batch variations in shade may occur within commercial tolerances. We reserve the right to alter technical specifications without notice. The Unregistered Design Rights and the Copyright in all designs are the exclusive property of Camira Fabrics Limited.

---

## Main Line Flax

---

### Memo Group 6

---

#### Composition

75% Pure New Wool, 25% Flax

---

#### Environment

Certified to the EU Ecolabel  
Certified to Indoor Advantage™ Gold  
Rapidly renewable and compostable  
Made from wool and plant fiber

---

#### Width

54 inches minimum

---

#### Weight

13 oz/sq yd ±5% (19<sup>1/4</sup> oz/running yd ±5%)

---

#### Abrasion Resistance\*

ASTM D4157 Wyzenbeek method, Heavy Duty  
Upholstery Independently certified to ≥100,000 double  
rubs

Covered by a full and comprehensive 10 year guarantee  
(full details available)

---

#### Flammability

California Technical Bulletin 117 - 2013

NFPA 260 + UFAC Class 1

BS 7176 Medium Hazard

ASTM E84 Class 1 or A (Adhered)

ASTM E84 Class 2 or B (Un-adhered)

IMO FTP Code (Part 8)

Note: Flammability performance is dependent on components used. Our certificates show what substrates have been used in our tests. For composite tests customers must ensure their complete furniture meets the necessary standards.

---

#### Color Fastness to Light

AATCC-16 (40 hours) Class 4

---

#### Color Fastness to Crocking

AATCC-8 (Dry: 4, Wet: 3)

---

#### Acoustic Properties

Acoustically transparent, acoustic graphs available  
upon request.

---

#### Cleaning

W/S

Clean with a water-based cleaning agent or solvent:  
Depending on the stain, you can use a dry-cleaning  
solvent, the foam of a mild detergent, or upholstery  
shampoo.

\*Abrasion test results exceeding ACT Performance Guidelines are not an indicator of product lifespan. Multiple factors affect fabric durability and appearance retention. We're confident in the durability of our products so we provide a robust 10 year guarantee (full details available). This product is externally certified, details of which are on our website and available from our customer services team. Batch to batch variations in shade may occur within commercial tolerances. We reserve the right to alter technical specifications without notice. The Unregistered Design Rights and the Copyright in all designs are the exclusive property of Camira Fabrics Limited.

---

## Oceanic

---

### Memo Group 5

---

#### Composition

100% post-consumer recycled polyester, including 50%  
SEAQUAL yarn.

---

#### Environmental

Certified to OEKO-TEX® Standard 100  
Certified to Indoor Advantage™ Gold  
Made from 100% post-consumer recycled polyester  
Non metallic dyestuffs

---

#### Width

54 inches minimum

---

#### Weight

14<sup>3/4</sup> oz/sq yd ±5% (22<sup>1/2</sup> oz/running yd ±5%)

---

#### Abrasion Resistance\*

ASTM D4157 Wyzenbeek method.

Heavy Duty Upholstery independently certified to  
≥100,000 double rubs.

Covered by a full and comprehensive 10 year guarantee  
(full details available)

---

#### Flammability

California Technical Bulletin 117 - 2013

BS 7176 Low Hazard

ASTM E84 Class 1 or A (Un-adhered)

**Optional: Please specify when ordering:**

BS 5852 Ignition Source 5 with EnviroFlam5

BS 7176 Medium Hazard with EnviroFlam5

Note: Flammability performance is dependent on components used. Our certificates show what substrates have been used in our tests. For composite tests customers must ensure their complete furniture meets the necessary standards.

---

#### Color Fastness to Light

AATCC-16 (40 hours) Class 4

---

#### Color Fastness to Crocking

AATCC-8 (Dry: 4, Wet: 3)

---

#### Bleach Cleanable

ISO 105 E03 color change 4 for dilution factor 1:4  
chlorine solution

---

#### Cleaning

W/S

Water-based cleaning agent or solvent: Depending on  
the stain, you can use a dry-cleaning solvent, the foam of  
a mild detergent, or upholstery shampoo.

\*Abrasion test results exceeding ACT Performance Guidelines are not an indicator of product lifespan. Multiple factors affect fabric durability and appearance retention. We're confident in the durability of our products so we provide a robust 10 year guarantee (full details available). This product is externally certified, details of which are on our website and available from our customer services team. Batch to batch variations in shade may occur within commercial tolerances. We reserve the right to alter technical specifications without notice. The Unregistered Design Rights and the Copyright in all designs are the exclusive property of Camira Fabrics Limited.

---

## Quest

---

### Memo Group 4

#### Composition

100% post-consumer recycled polyester, including 75% SEAQUAL® YARN.

#### Environmental

Certified to OEKO-TEX® Standard 100  
Certified to Indoor Advantage™ Gold  
Made from 100% post-consumer recycled polyester  
Non metallic dyes/stuffs

#### Width

54 inches minimum

#### Weight

9<sup>3/4</sup> oz/sq yd ±5% (14<sup>1/2</sup> oz/running yd ±5%)

#### Abrasion Resistance\*

ASTM D4157 Wyzenbeek method.  
Heavy Duty Upholstery independently certified to ≥100,000 double rubs.  
Covered by a full and comprehensive 10 year guarantee (full details available)

#### Flammability

California Technical Bulletin 117 - 2013  
NFPA 260 + UFAC Class 1  
BS 7176 Low Hazard

ASTM E84 Class 1 or A (Adhered)  
ASTM E84 Class 1 or A (Un-adhered)

**Optional: Please specify when ordering:**  
BS 7176 Medium Hazard with EnviroFlam5

Note: Flammability performance is dependent on components used. Our certificates show what substrates have been used in our tests. For composite tests customers must ensure their complete furniture meets the necessary standards.

#### Color Fastness to Light

AATCC-16 (40 hours) Class 4

#### Color Fastness to Crocking

AATCC-8 (Dry: 4, Wet: 3)

#### Acoustic Properties

Acoustically transparent, acoustic graphs available upon request.

#### Bleach Cleanable

ISO 105 E03 color change 4 for dilution factor 1:4 chlorine solution

#### Cleaning

W/S  
Vacuum regularly. Wipe with a damp cloth using a proprietary upholstery shampoo/soap. For deeper cleaning use steam, bleach, alcohol or professionally dry clean. Can be washed at 140F. Full details can be found in our cleaning and disinfection guide.

---

\*Abrasion test results exceeding ACT Performance Guidelines are not an indicator of product lifespan. Multiple factors affect fabric durability and appearance retention. We're confident in the durability of our products so we provide a robust 10 year guarantee (full details available). This product is externally certified, details of which are on our website and available from our customer services team. Batch to batch variations in shade may occur within commercial tolerances. We reserve the right to alter technical specifications without notice. The Unregistered Design Rights and the Copyright in all designs are the exclusive property of Camira Fabrics Limited.

---

## Rivet

---

### Memo Group 2

#### Composition

100% Post Consumer Recycled Polyester

#### Environment

Certified to the EU Ecolabel  
Certified to Indoor Advantage™ Gold  
Made from 100% post-consumer recycled polyester

#### Width

54 inches minimum

#### Weight

8<sup>1/4</sup> oz/sq yd ±5% (12<sup>1/2</sup> oz/running yd ±5%)

#### Abrasion Resistance\*

ASTM D4157 Wyzenbeek method, Heavy Duty Upholstery  
Independently certified to ≥50,000 double rubs  
Covered by a full and comprehensive 10 year guarantee (full details available)

#### Flammability

California Technical Bulletin 117 - 2013  
NFPA 260 + UFAC Class 1  
BS 7176 Low Hazard

ASTM E84 - Class 2 or B (Adhered)  
ASTM E84 - Class 1 or A (Un-adhered)

**Optional: Please specify when ordering:**  
BS 7176 Medium Hazard with EnviroFlam5

Note: Flammability performance is dependent on components used. Our certificates show what substrates have been used in our tests. For composite tests customers must ensure their complete furniture meets the necessary standards.

#### Color Fastness to Light

AATCC-16 (40 hours) Class 4

#### Color Fastness to Crocking

AATCC-8 (Dry: 4, Wet: 3)

#### Bleach Cleanable

ISO 105 E03 color change 4 for dilution factor 1:4 chlorine solution

#### Cleaning

W/S  
Vacuum regularly. Wipe with a damp cloth using a proprietary upholstery shampoo/soap. For deeper cleaning use steam, bleach, alcohol or professionally dry clean. Can be washed at 140F. Full details can be found in our cleaning and disinfection guide.

---

\*Abrasion test results exceeding ACT Performance Guidelines are not an indicator of product lifespan. Multiple factors affect fabric durability and appearance retention. We're confident in the durability of our products so we provide a robust 10 year guarantee (full details available). This product is externally certified, details of which are on our website and available from our customer services team. Batch to batch variations in shade may occur within commercial tolerances. We reserve the right to alter technical specifications without notice. The Unregistered Design Rights and the Copyright in all designs are the exclusive property of Camira Fabrics Limited.

---

## Synergy

---

### Memo Group 6

#### Composition

95% Pure New Wool, 5% Nylon

#### Environment

Certified to the EU Ecolabel  
Certified to Indoor Advantage™ Gold

#### Width

54 inches minimum

#### Weight

11<sup>3/4</sup> oz/sq yd ±5% (17<sup>3/4</sup> oz/running yd ±5%)

#### Abrasion Resistance\*

D4966 Martindale method, Heavy Duty Upholstery  
Independently certified to ≥100,000 cycles  
Covered by a full and comprehensive 10 year guarantee (full details available)

#### Flammability

California Technical Bulletin 117 - 2013  
NFPA 260 + UFAC - Class 1  
BS 7176 Low Hazard

ASTM E84 Class 2 or B (Adhered)  
ASTM E84 Class 2 or B (Un-adhered)  
IMO FTP Code (Part 8)

**Optional please specify when ordering:**  
BS 7176 Medium Hazard when FR treated  
ASTM E84 Class 1 or A (Adhered) when FR treated  
NFPA 701 when FR treated

Note: Flammability performance is dependent on components used. Our certificates show what substrates have been used in our tests. For composite tests customers must ensure their complete furniture meets the necessary standards.

#### Color Fastness to Light

AATCC-16 (40 hours) Class 4

#### Color Fastness to Crocking

AATCC-8 (Dry: 4, Wet: 3)

#### Acoustic Properties

Acoustically transparent, Acoustic graphs available upon request.

#### Cleaning

W/S  
Clean with a water-based cleaning agent or solvent: Depending on the stain, you can use a dry-cleaning solvent, the foam of a mild detergent, or upholstery shampoo.

---

\*Abrasion test results exceeding ACT Performance Guidelines are not an indicator of product lifespan. Multiple factors affect fabric durability and appearance retention. We're confident in the durability of our products so we provide a robust 10 year guarantee (full details available). This product is externally certified, details of which are on our website and available from our customer services team. Batch to batch variations in shade may occur within commercial tolerances. We reserve the right to alter technical specifications without notice. The Unregistered Design Rights and the Copyright in all designs are the exclusive property of Camira Fabrics Limited.