

Memo *Finishes*

Finishes are integral in our efforts to honor the essential. Guided by the insight and sensibilities of the designer Laura-Guido Clark, we've selected finishes that bring out the natural character of materials while also imparting rich tones, textures, and temperatures. Curated with these characteristics in mind, we offer a dynamic palette that includes colors from neutral to bold, temperatures from cool to warm, and textures from matte to gloss.

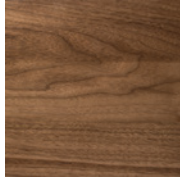
Our *Colors and Finishes*

Wood/Veneer

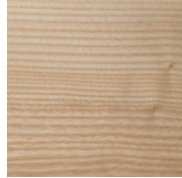
Memo finishes on solid wood and wood veneer are created using a two-step conversion varnish, formulated to withstand the wear and tear of commercial interiors. They are applied using a combination of hand rubbed and spray methods to allow the best expression and preservation of the visual characteristics and warmth of wood.



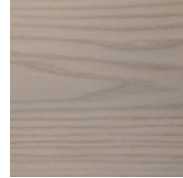
Clear Over Beech
WCB



Clear Over Walnut
WCW



Clear Over Ash
WCA



Gray Over Ash
WGA



Oak Over Ash
WOA



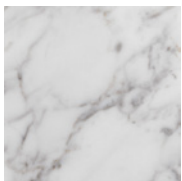
Walnut Over Ash
WWA



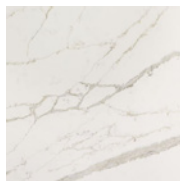
Navy Painted Wood
WNP

Stone & Quartz

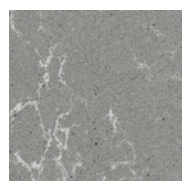
Stone and quartz materials are offered as durable, natural alternates to solid surface. Smooth in texture and rich in depth and pattern, our stone and quartz are procured from premium resources and suppliers, and available in dark and light options. The characteristics of stone create a natural diversity of pattern and color, thus our materials will vary accordingly.



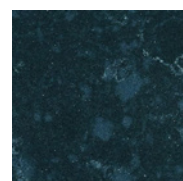
White Gray Marble
RWM



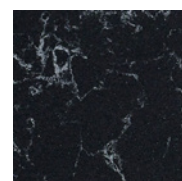
Valente Pearl Quartz
RVQ



Concrete Gray Quartz
RCQ



Indigo Swirl Quartz
RIQ



Onyx Carrara Quartz
ROQ

Metal: Stainless Steel & Powder Coat

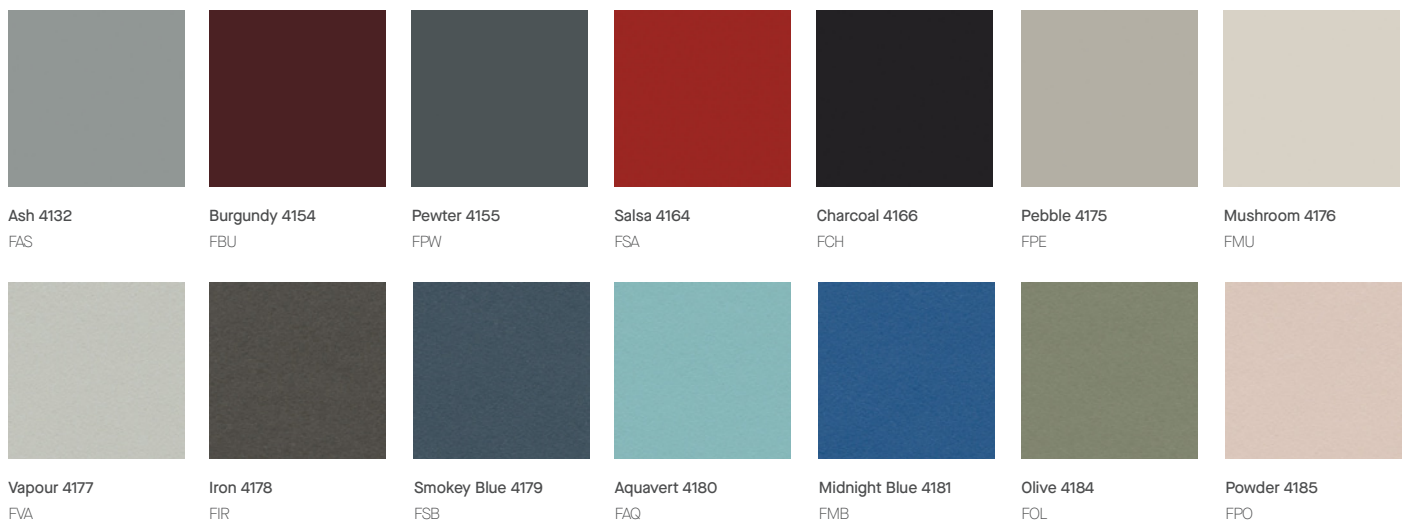
Brushed stainless steel is available on select metal components. Our stainless is a 200 series stainless, with a #4 brushed finish, and has been selected for commercial interiors.

Powder coating offers a durable approach to finishing metal components that is ideal for commercial interiors and is environmentally considerate. Memo offers a selection of metallic neutrals and vivid hues in smooth and textured varieties, chosen to thoughtfully complement adjacent materials and finishes.



Forbo Furniture Linoleum

Memo offers Forbo furniture-grade linoleum on select products. Forbo is a durable surface material, available in a dynamic range of colors. Derived from solidified Linseed Oil and other natural fillers such as cork and wood dust, Forbo is a sustainable and resilient surface choice.



Our *Open Lines*

Solid Surface

Memo offers all Corian solid surface products for most areas and components that demand exceptional durability and cleaning. Corian is an Acrylic-Aluminum composite that provides a highly resilient, seamless surface. To see the full Corian color offering visit their [website](#). For a full list of all graded Corian products, please consult our Price List.

Laminates

Memo products with laminate include any Standard grade selections from our partners Wilsonart and Formica. For a list of all Standard grade laminates, please consult our Price List. For specifications outside of this offer or higher grade selections, please contact our customer service team for pricing.

Memo *Textiles*

Memo partners with the textile industry to evaluate and procure textiles for our products. Our quoting, sketching, and pricing tools are designed to support our customers throughout the process, and allow for easy visualization, price inquiry, and specification. Memo's approach to textiles is to partner with the best suppliers in the industry, to make textiles easy to visualize, evaluate, and procure by our customers.

Maharam

Memo has partnered with Maharam to offer graded-in textiles. Maharam provides a broad range of stunning and long-lasting commercial products, and their approach to design, quality, and customer relationships aligns with our values. Maharam's textiles portfolio is available on all Memo products. For a full list of Maharam textiles and prices, please consult our Price List. Memo also supports COM specifications; for inquiries regarding COM, please contact our customer service team.