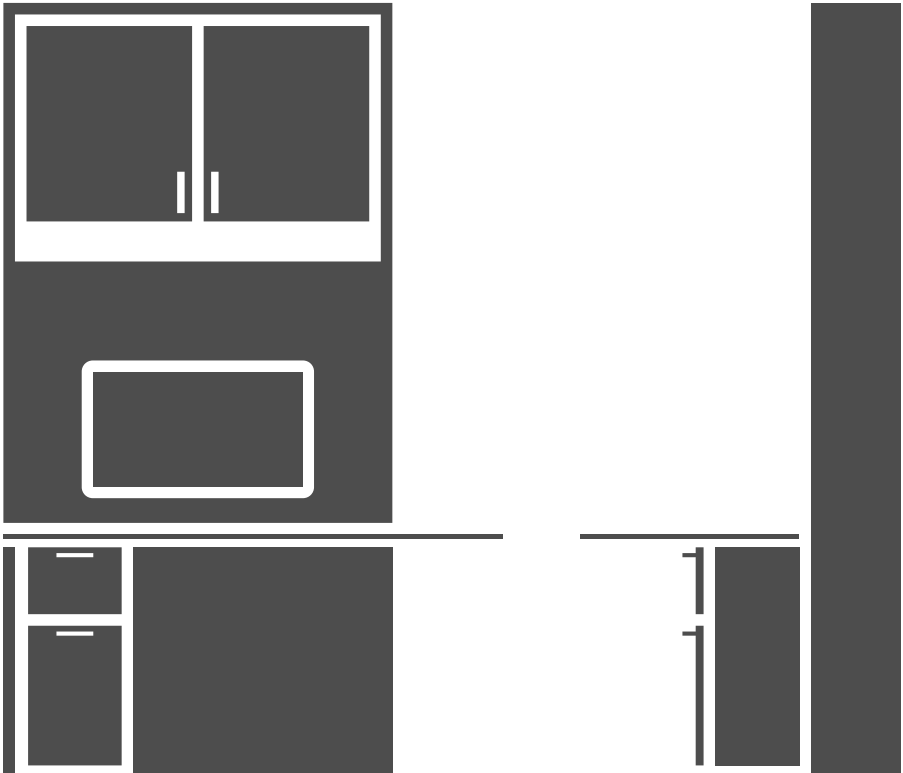
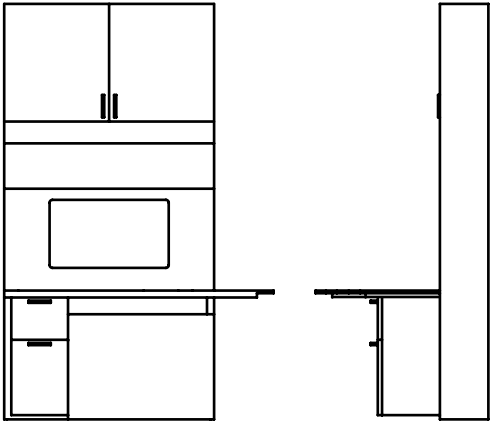


Array

Designed by George Simons, 2018



Compact Work Station - LSF GS02-WS-LSF
Compact Work Station - RSF GS02-WS-RSF



Compact Work Station - LSF GS02-W2-LSF

Compact Work Station - RSF GS02-W2-RSF

A simple and functional modular casework system designed to allow consistency of lines, forms, and details across a broad range of standard and custom configurations. Compact work stations are designed to support short duration individual and collaborative work, and to place adjacent tools and technology within close proximity.

Depth	Width	Height
30.75"	47.5"	73.25"

Features

- Delineated inner and outer cases allow material layering
- Open-line laminates for outer case wrap, doors, and drawers
- Visible file storage for clear display and easy access
- Resilient solid surface on work surfaces
- Supports integrated monitor accessories
- Compact work surface for reduced footprint
- Flush-mount hanging system maximizes space
- Soft-close door and drawer hardware

Options

- Bow, Tab, or Straight pulls
- File holders
- Monitor supports
- Veneer outer wrap
- Veneer doors, drawers, and facia

Specifiable Materials

Laminates: Open line HPL

Pulls: Brushed nickel

Solid surface: Corian

Wood veneer: Catalyzed Lacquer over Ash or Walnut, Stain

Colors and Finishes

Please see our Finishes Palette online to review actual swatches, specs, and to order samples → Memo Finishes Page

Content and Construction

Carcass and case: Particle board core with Melamine face

Construction: Tab and slot joinery

Fronts and case wrap: Particle board core with HPL or veneer face

Mounting: Extruded French cleat

Tops: Solid surface, machined and seamed

Testing

Memo products are designed to meet the requirements of the BIFMA test protocol and are also subject to additional performance requirements in order to withstand the rigors of commercial interiors.

For specific testing information, please contact us at info@memofurniture.com.

Environmental

For inquiries regarding Greenguard, MBDC, LEED, and LBC, please contact us at info@memofurniture.com.

Notes

- Custom sizes available upon request. Subject to price increase.
- Standard edge banding is PVC. Non-PVC options can be procured at customer request and subject to upcharges.
- Designed and made in Seattle, Washington, USA.